

HISTORIC DOWNTOWN JERSEY CITY

SPECIAL IMPROVEMENT DISTRICT

Re: HDSID Proposed Expansion

Rachel Sieg
Executive Director
HDSID
344 Grove Street PMB 52
Jersey City, NJ 07302

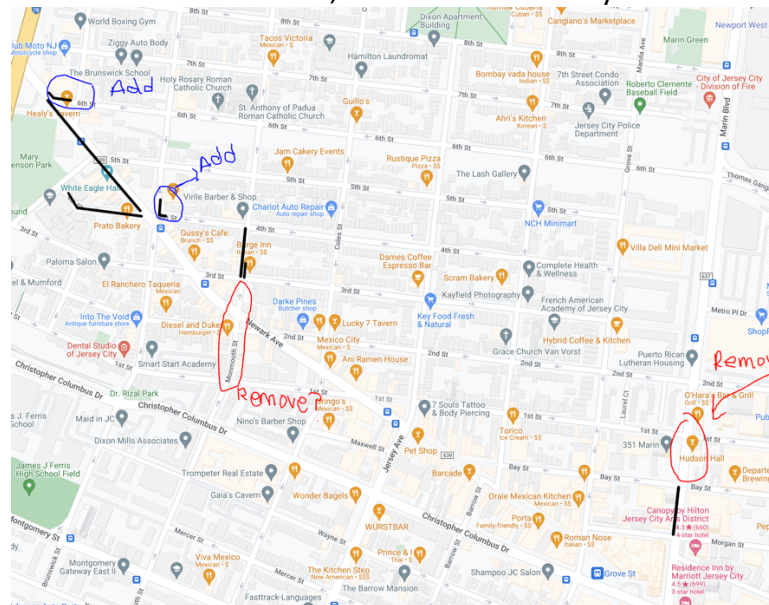
February 21st 2024

Laura Tacuri
Deputy Tax Assessor
Office of the City Assessor
One Jackson Square
364 Martin Luther King Drive., 3rd Floor
Jersey City, NJ 07305

Dear Laura,

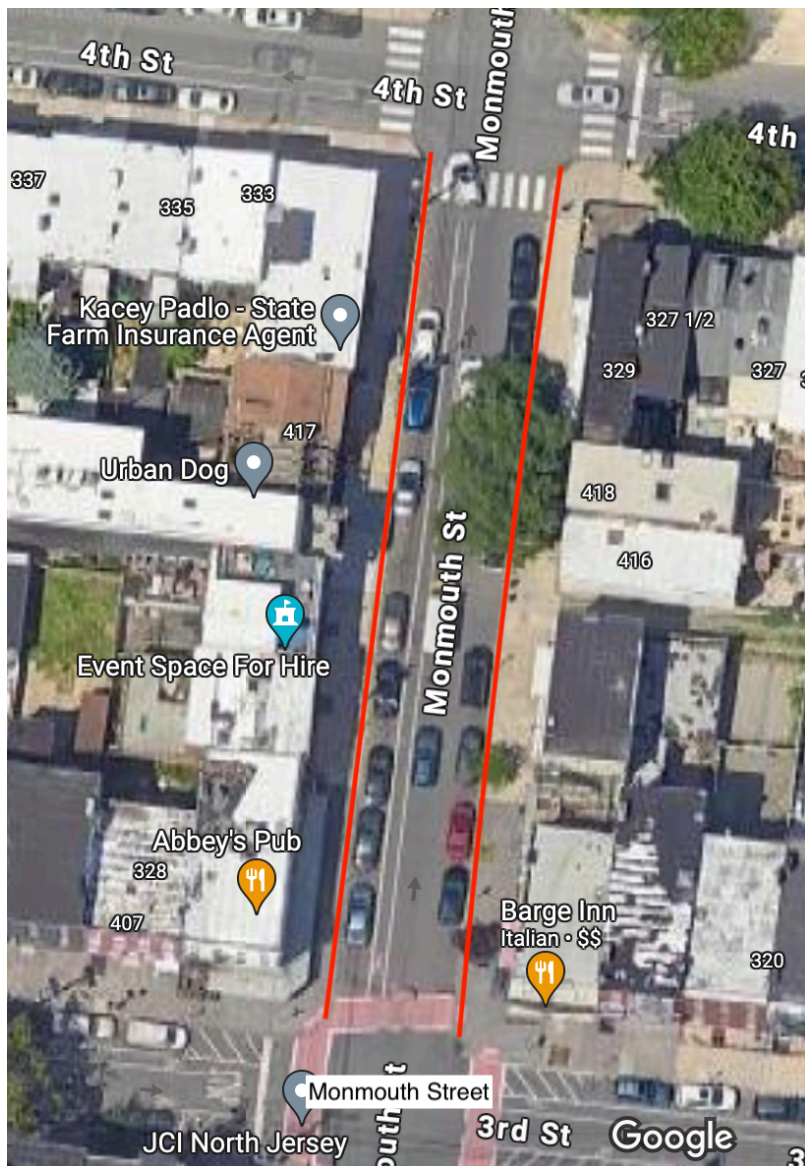
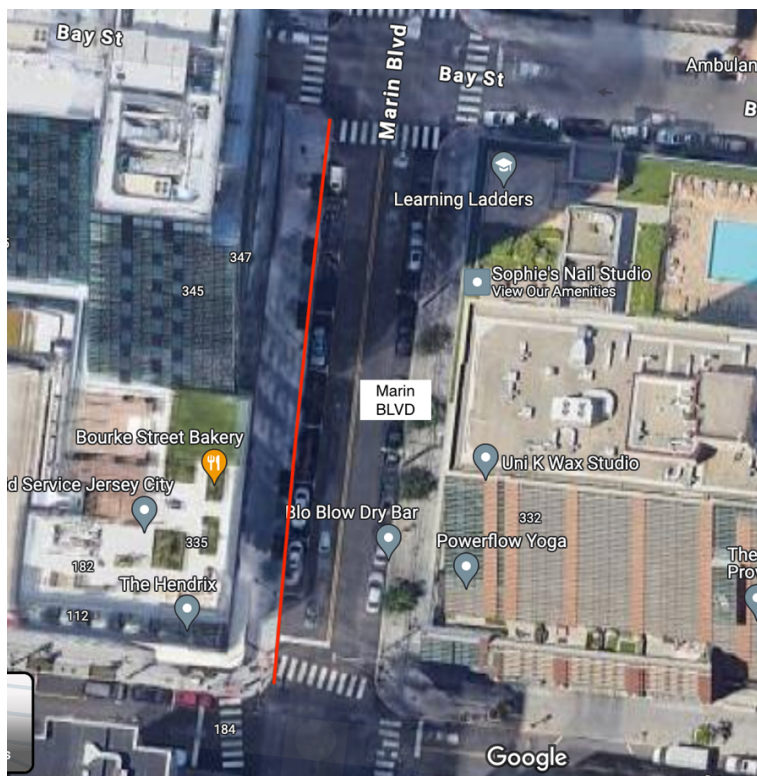
On behalf of the Historic Downtown Special Improvement District (HDSID), I am writing to provide an update regarding the modified HDSID expansion map.

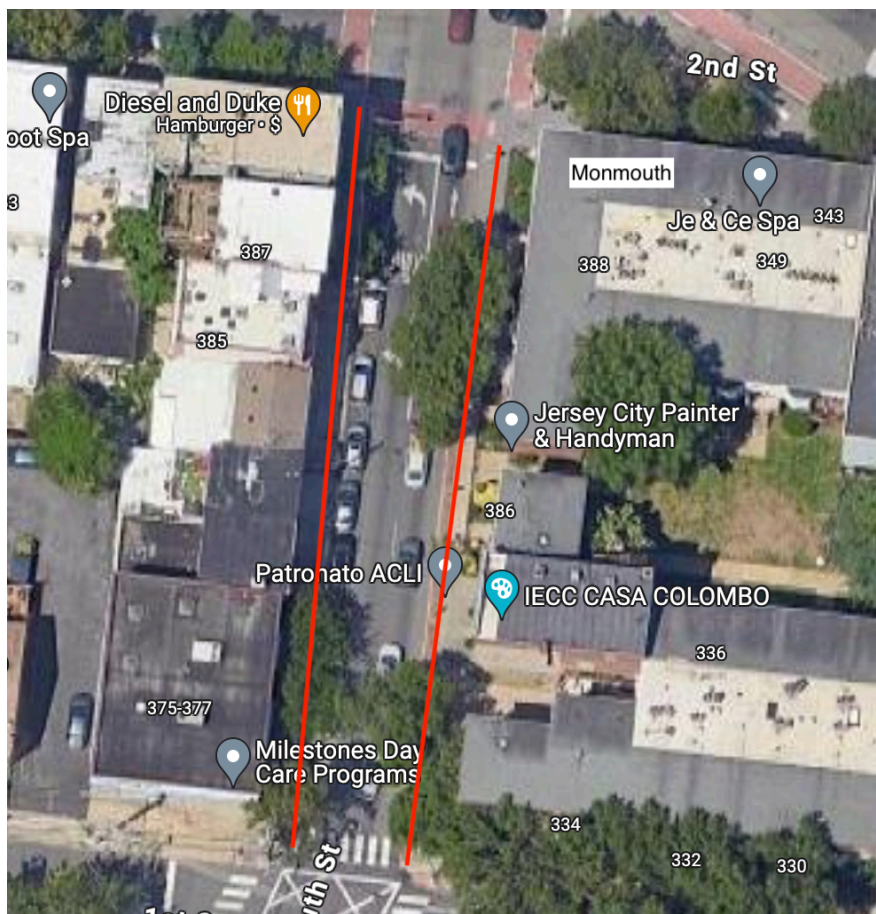
After our meeting earlier this morning at City Hall, we have made revisions to the proposed expansion map to better align with the evolving needs and dynamics of our district. Please note that on the map you sent via email (below) we are adding 6th Street (The Little Gym) corner of Brunswick and 4th Street, Monmouth Street (from First to 4th Street) and will not include Marin Boulevard, the section from Bay to First Street.

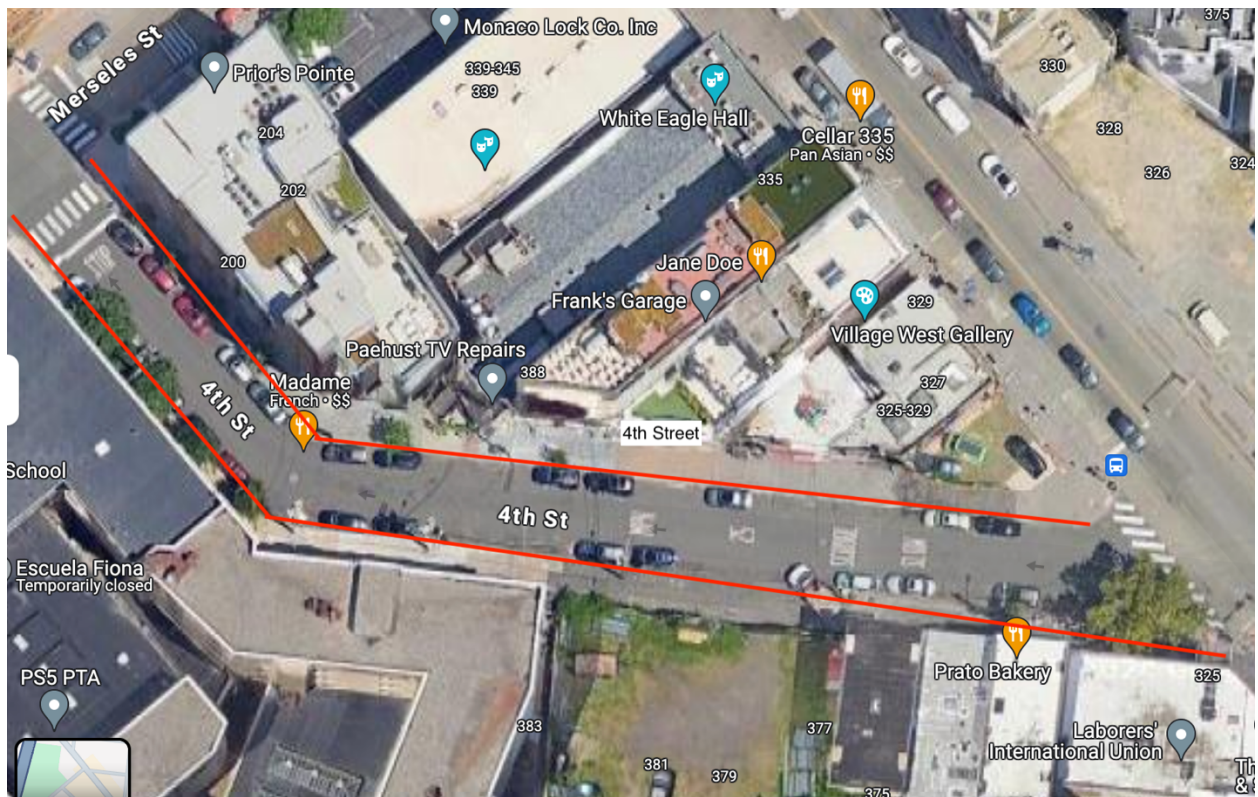


Here are the updated maps of the proposed expansion:









Below is a list of the identified businesses/property locations that our organization has noticed:

Bourke Street Bakery 331 Marin Boulevard

Art House Productions 345 Marin Boulevard
Bond Vet 357 Marin Boulevard

Abbey's Pub 409 Monmouth Street
Barge Inn 324 3rd Street
Hudson Tea House & Co. Event Space & Corporate Catering 411 Monmouth Street
Urban Dog 415 Monmouth Street
Kacey Padlo - State Farm Insurance Agent 419 Monmouth Street

Milestones Day Care Programs 375 Monmouth Street
NJ Skateshop Jersey City 383 Monmouth Street
Diesel and Duke 389 Monmouth Street

Rabble and Lion 156 Brunswick Street

Prato Bakery 371 4th Street
The Center for Joint & Spine Relief 311 Newark Avenue
Madame 390 4th Street
Snap Fitness 139 Brunswick Street

Village West Gallery 331 Newark Avenue
Jane Doe 333 Newark Avenue
Cellar 335 335 Newark Avenue
White Eagle Hall 337 Newark Avenue

Healy's Tavern 374 Newark Avenue
The Power Plant Kitchen by Boyce Mode 361 Newark Avenue
The Little Gym 380 Newark Avenue

Sincerely,

Rachel Sieg
Executive Director
HDSID